

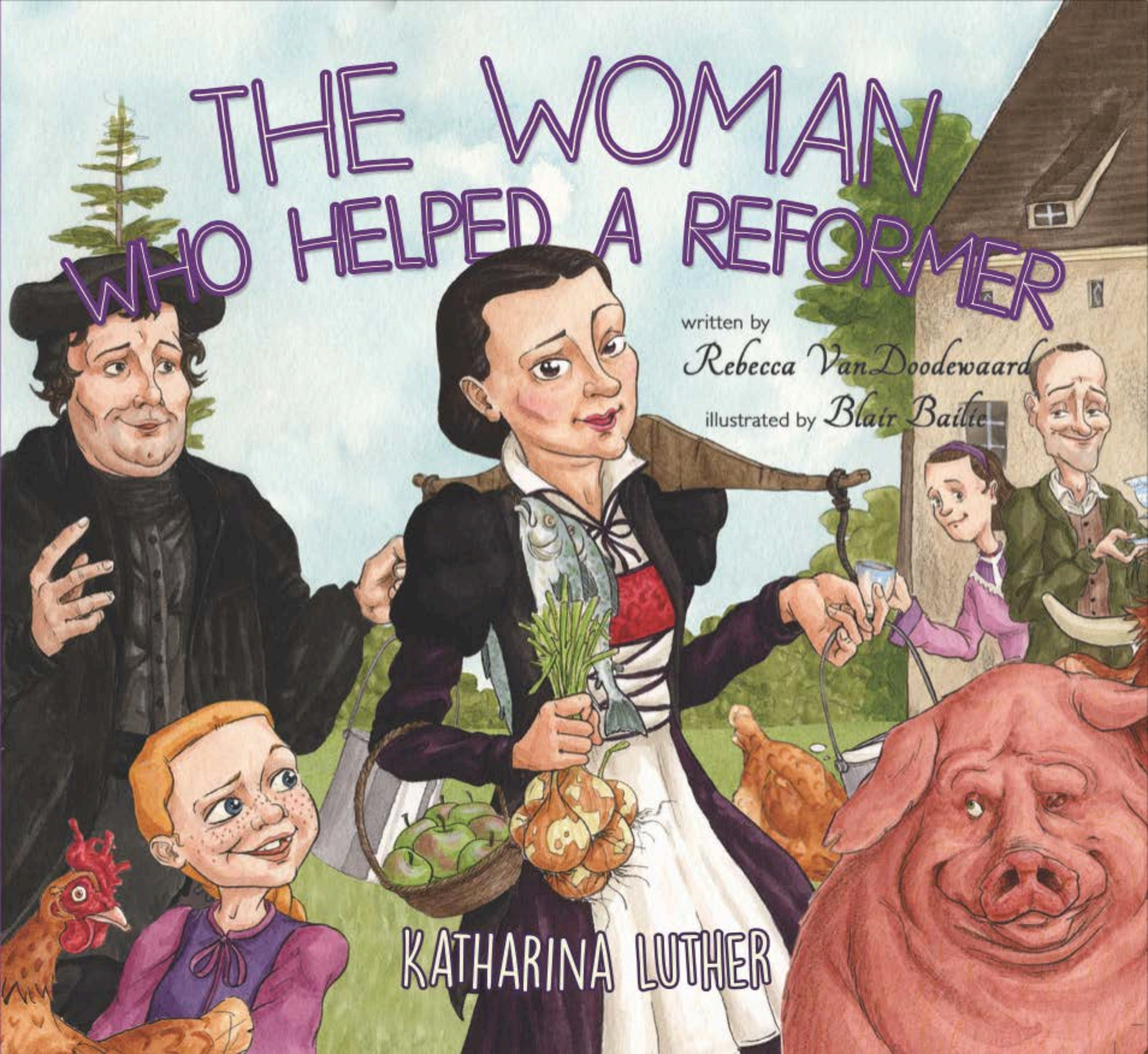
THE WOMAN WHO HELPED A REFORMER

written by

Rebecca Van Doodewaard

illustrated by *Blair Bailie*

KATHARINA LUTHER



An illustration of a large, multi-story house with a central tower. The house has a dark roof with several chimneys and dormer windows. The central tower is cylindrical with a dark dome and a small lantern on top. The house is surrounded by a courtyard with a pond, a vegetable garden, and various farm animals like pigs and ducks. There are trees and bushes around the house.

What a big house!

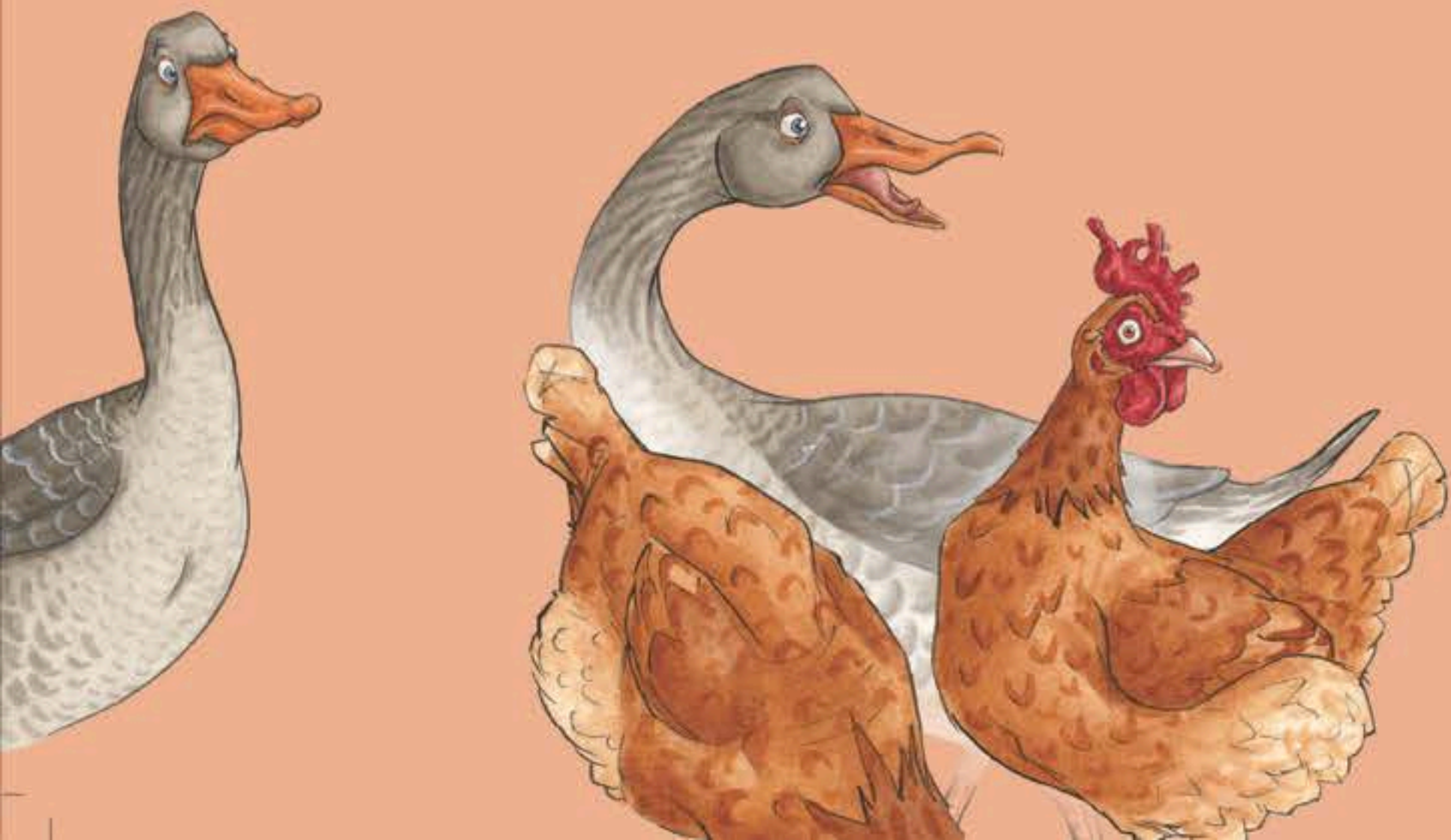
It almost looks like a castle.

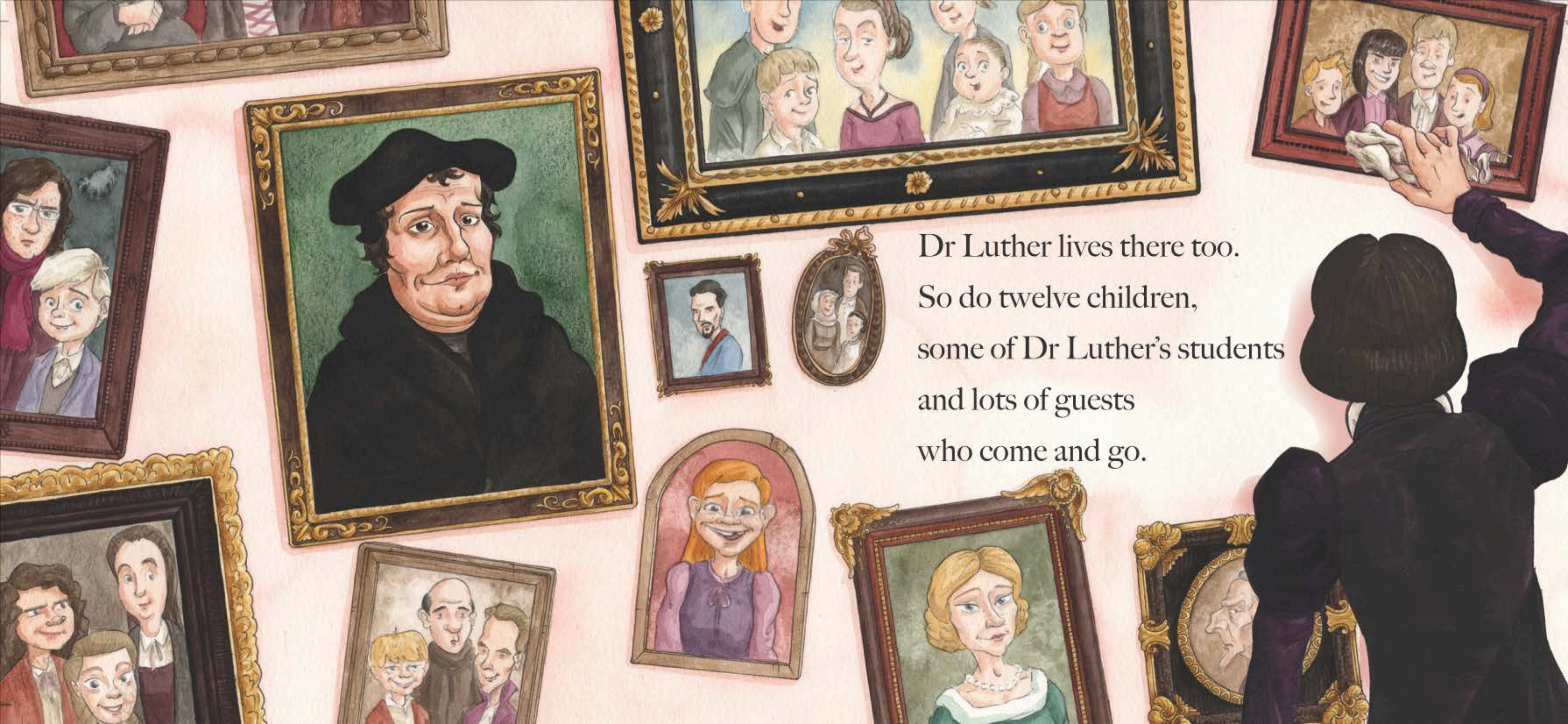
I wonder who lives there?

Mrs Luther does.

But she is not the only one.

Oh, no!

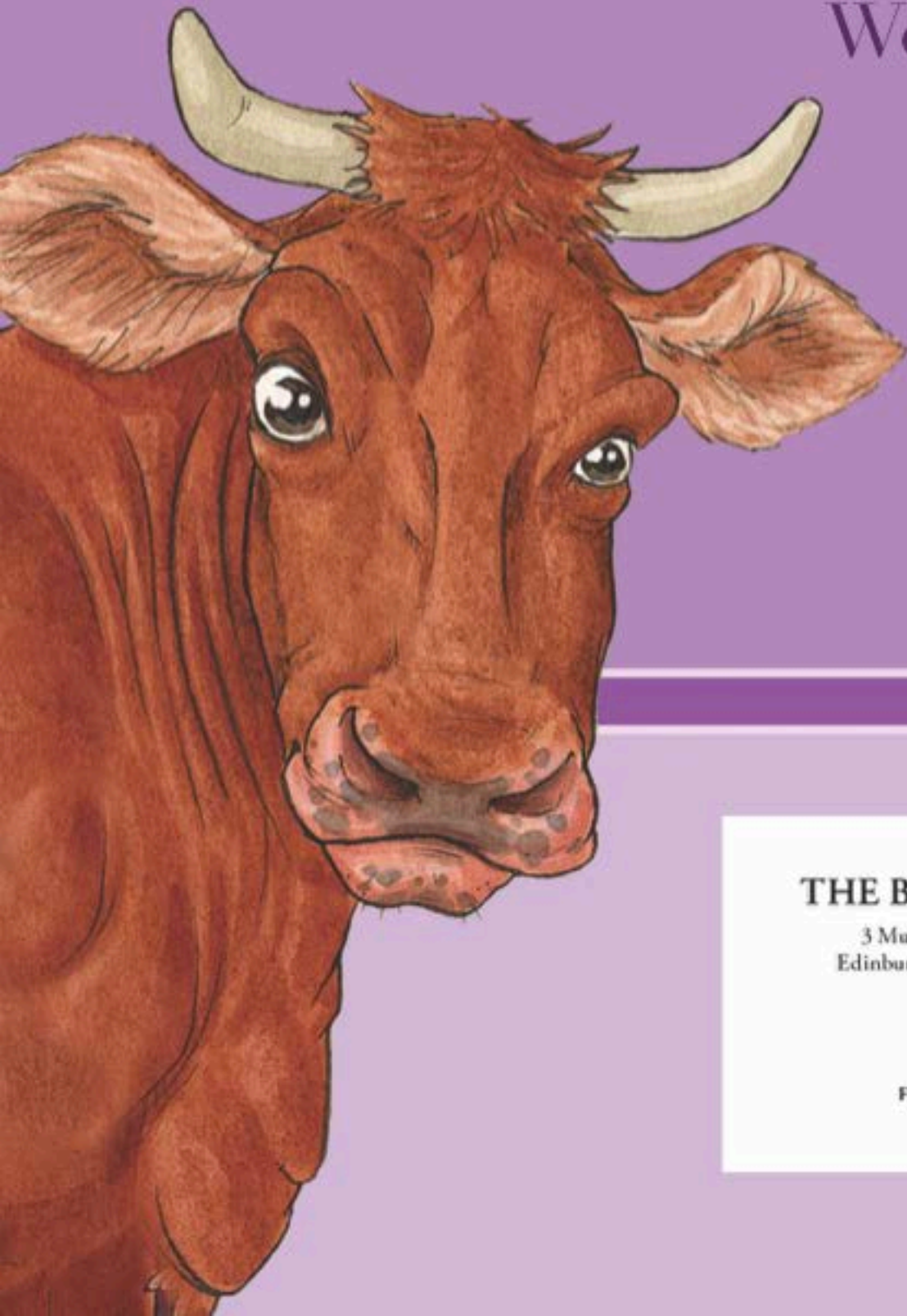




Dr Luther lives there too.
So do twelve children,
some of Dr Luther's students
and lots of guests
who come and go.

What does Katharina Luther do
with an old monastery, lots of
children, a busy husband, many
guests, and little money?
Work very hard!

Take a peek at
Katharina Luther's days
looking after it all out of
thankfulness to God.



THE BANNER OF TRUTH TRUST

3 Murrayfield Road
Edinburgh EH12 6EL
U.K.

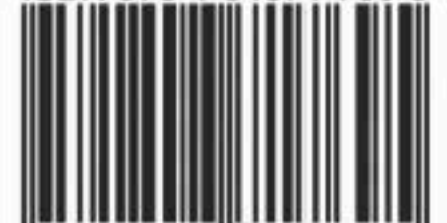


PO Box 621, Carlisle
Pennsylvania 17013
U.S.A.

www.banneroftruth.org

First published 2017 © Rebecca VanDoodewaard
Printed in China

ISBN 978-1-84871-769-5



9 781848 717695